

Horen Hygiene Pallet



Technical Specification

Ext Dimensions(mm): L1200*W1000*H150

Weight: 18.3kg plastic + 6.2kg steel

Material: PP

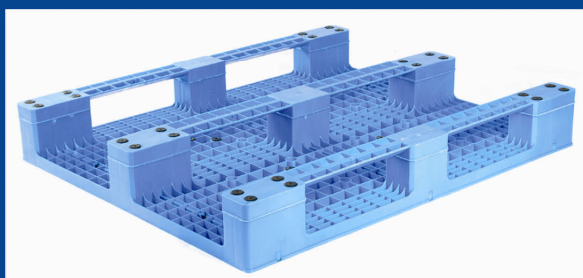
Colour: Blue

Load Capacity

- Static: up to 6000kg
- Dynamic: up to 1500kg
- Racking: up to 1000kg

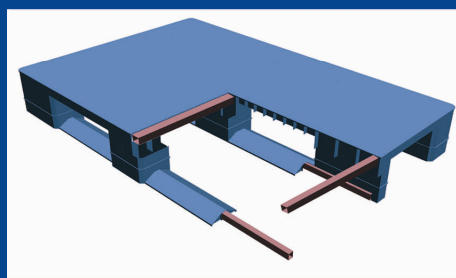
Quantity in Container

- 240pcs/20GP
- 452pcs/40GP
- 508pcs/40HC



Bottom View

Anti-slip strips top and bottom of the pallet to ensure no product slippage while on the pallet



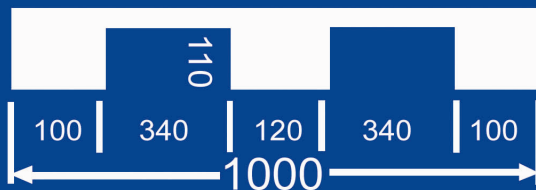
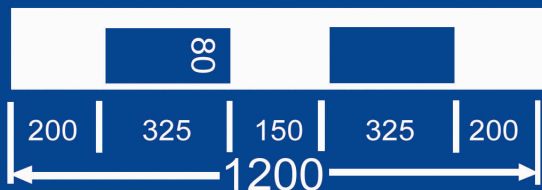
Steel Tube View

Anti-Slip strips also makes transporting and lifting by forklift easier

Key Features and Benefits

- Designed as an all purpose food grade pallet
- Extremely high load bearing capability due to integrated reinforcement profiles
- Smooth top deck ensures ultimate cleanliness
- No risk of contamination if cleaned thoroughly between uses

4-Way Forklift Entry Dimensions



Auckland
8 Vestey Drive
Mt Wellington
PO Box 22462, Otahuhu
Auckland, New Zealand
Tel: +64 9 276 8679
Fax: +64 9 276 4392

Wellington
Level 2, 46-50
Bloomfield Terrace
PO Box 30238, Lower Hutt,
Wellington, New Zealand
Tel: +64 4 570 3328
Fax: +64 4 570 3329

Christchurch
Cnr Brougham &
Gasson Streets
PO Box 7111,
Christchurch, New Zealand
Tel: +64 3 365 4382
Fax: +64 3 366 6026