

VISCOUNT RECRATE RANGE

47 LITRE DEEP NEST CRATE



The Viscount 47L deep nest crate is moulded from food grade polypropylene and helps to reduce road transport costs by almost doubling the number of crates per pallet, over the standard 47L crate.

Dimensions

Ext: 600 x 400 x 253mm
Int: 544 x 344 x 223mm

Incremental height

Nest: 62mm
Stack: 240mm

Product weight: Vented: 1.92kg
Maximum top load 180kg

Customer branding: Moulded-in or hot stamped
Colours available, quantity dependent

Please consult Viscount Plastics where weights, volumes and dimensions are critical, as those shown should be treated as indicative only. (Viscount Plastics reserves the right to make product alterations at its discretion).



Auckland
8 Vestey Drive,
Mt Wellington
PO Box 22462, Otahuhu
Auckland, New Zealand
Tel: +64 9 276 8679
Fax: +64 9 276 4392

Wellington
Level 2, 46-50
Bloomfield Terrace
PO Box 30238, Lower Hutt,
Wellington, New Zealand
Tel: +64 4 570 3328
Fax: +64 4 570 3329

Christchurch
Cnr Brougham &
Gasson Streets
PO Box 7111,
Christchurch, New Zealand
Tel: +64 3 365 4382
Fax: +64 3 366 6026



RECRATE RANGE

www.viscountplastics.co.nz



RECRATE RANGE

www.viscountplastics.co.nz

TECHNICAL SPECIFICATIONS



Feature

75% Deep Nest

Benefit

Nesting to a quarter of its height almost doubles quantity per pallet over the standard Recrate 47; reduces road transport costs and optimises available storage space



Interlocking horizontal Ribs and strapping lugs

Ribs help stop crates riding up against each other; corner strap retainers encourage the use of strapping to further secure loads



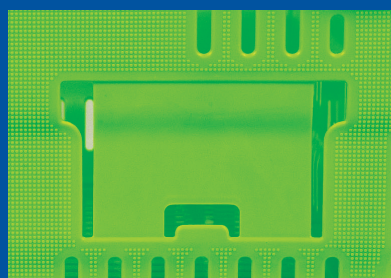
Positive lock stacking bars and base

When stacked, ribs lock into the base of the crate above to prevent any sideways movement



No sharp edges

Smooth radius ventilation slots prevent contents damage and optimise air flow; no sharp corners and completely smooth interior to limit bruising and tearing



Stippled exterior surface and robust ID card holder

Stipple makes it easy for auto wash systems to completely remove self adhesive labels; a hygiene plus where crates are used on food processing lines



Acknowledges environmental responsibilities

Deep nesting helps reduce hydrocarbon emissions by improving efficiency in pallet transportation; crates are 100% recyclable to limit landfill waste; Viscount Plastics has ISO 14001 environmental accreditation

